

Newsletter



Nottingham Country MUD

WATER CONSERVATION

INSIDE THIS ISSUE:	
Water Trivia	2
Exemption Raised	2
Questions & Comments	2
Sewage Basics	3
Park News	4

Why conserve water?

The Nottingham Country MUD is currently supplied by groundwater wells, which have a limited amount of water. Additionally our MUD is not expected to go on surface water from the City of Houston until around 2030, if then. According to the Texas Water Development Board, Texas' population by 2050 will increase by 90%. Water demand in Texas will exceed available resources by 25%. Thus, water is clearly an issue.

The average single-home indoor residential use is 69 gallons per person per day. This usage can be reduced by a third

by changing water wasting habits, installing water efficient fixtures, and reducing leaks. In addition, outdoor water use in the summer, which adds an additional 50% to total water use, can be reduced significantly with proper water management while homes can still have beautiful yards. The Nottingham Country MUD is a Water Smart Partner of the Association of Water Board Directors. The goal of the Texas Water Development Board's Water Smart Programs is to make Texans aware of the value of water everyday, not just in times of drought. Water is precious and everyone must learn to use it responsibly with-

out waste. Water conservation tips from the Water Smart Program, as described below, can save many dollars in water bills and will also save water for future generations.

Did you know that about 75% of water used in the home is used in the bathroom? Look for ways to save water whenever possible. Take a shower instead of a bath to save water. A low-flow showerhead is the single most effective conservation step that can be taken inside the home. Standard toilets manufactured prior to the 1980s usually require 5-7 gallons per flush. Toilets sold during the '80s and the (cont'd pg.3)

MAY MEETING

DIRECTORS

- Ray Pavlovich
- Nancy Howard
- Midge Zak
- Phillip Irvin
- Chuck Garibay

In response to residents requests that more meetings be held in the neighborhood, the board has scheduled the regular monthly meeting for May 17, 2004 at 6:30 p.m. at Pattison Elementary School Cafeteria. Pattison is located at 19910

Stonelodge, Katy Tx 77450.

This meeting will be a regular business meeting of the MUD district and all interested residents are encouraged to attend. Meeting agendas are posted on the district's website approxi-

mately one week in advance. Please note that Board meetings are usually held on the third Monday of the month at the offices of ABH, LLP in Phoenix Tower. Website: www.nottinghammud.com



WATER TRIVIA

How much water is used to flush a toilet?

2-7 gallons

How much water is used in the average 5-minute shower?

25-50 gallons

How much water is used to brush your teeth?

2 gallons

How much water does an individual use daily?

50 gallons

How much water is used on the

average for an automatic dishwasher?

9-12 gallons

On the average, how much water is used to hand wash dishes?

20 gallons

How many community public water systems are there in the United States?

56,000

How much water do these utilities process daily?

34 billion gallons

How much water does the average residence use in a year?

107,000 gallons

What does a person pay for water on a daily basis?

National average is 25 cents

Source: US EPA



BOARD RAISES EXEMPTION

The Board of Directors at their March meeting voted to raise the ad valorem exemption level from \$40,000 to \$50,000 for persons who are disabled or are 65 years of age or older. This means that people who meet the criteria as defined by Texas law will see a reduction in their MUD taxes for the 2004 tax year. Currently the Nottingham Country MUD tax rate stands

at 53 cents per \$100 valuation. This rate is currently one of the better rates in the Houston area. In 1990 the tax rate was \$1.06 per \$100 valuation and has steadily dropped thanks to a proactive team of board members and consultants. The Board has tried to plan for future contingencies and address future needs of the district by implementing a Capital Im-

provement Plan which is on the web. This CIP was completed in 2002 as a formal plan for future development, rehabilitation, repair, and replacement of infrastructure in the District ensuring that our residents continue to enjoy high quality water, along with stable tax rates and stable water and sewer charges.

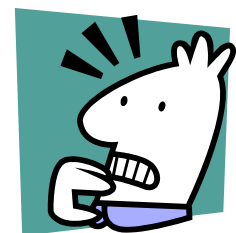
Currently the Nottingham Country MUD tax rate stands at 53 cents per \$100 valuation.

QUESTIONS & COMMENTS-CHUCK GARIBAY

Putting this newsletter together was one of the jobs that I “volunteered” to do and I must say that it required more work than I anticipated. This newsletter should be a way to get the word out about the MUD business and I also wanted it to be informative and fun. Searching for interesting articles is my

biggest challenge. One of the sections that I would like to develop would be an area to give the residents a forum to ask questions or give their comments about MUD or other items to benefit area residents. We all take for granted that clean sparkling water will flow when you open the faucet.

Likewise, you expect that waste water will be carried off when you flush the toilet. This “magic” is the result of a multi-million dollar infrastructure of pipes that come and go and competent people that make sure that everything works as designed. I would like to hear your comments, good or bad.



WATER CONSERVATION-CONTINUED

early '90s use 3.5 gallons per flush. The greatest savings come from replacing your toilet with a 1.6 gallon model. Since 1992 in Texas and 1994 nationally, new toilets must use 1.6 gallons or less per flush. Water leaks in lavatories and toilets can be a serious source of water waste and need to be repaired promptly. Did you know that an open flapper can waste 280,000 gallons of water in a month? In the lavatory area people need to change their habits. Don't let water run continuously while brushing your

teeth, shaving, or washing your hands. Additionally, a low-flow faucet aerator can save up to 50% of the water currently used in the lavatory.

About 8% of in-home water use takes place in the kitchen. Some tips in the kitchen are to run water only when necessary. Soak pots and pans before washing. Keep a pitcher of water in the fridge instead of running tap water until it is cold enough to drink. Dishwashers should be full before running the wash cycle. When you buy

a new machine, take a look at water saving models. Newer models can cut water use by 25% and generally are no more expensive than non-conserving models.

Conservation is the preservation and management of resources such as water to ensure that the supply will exist for future generations.

Source: www.awbd-tx.org

An open flapper can waste 280,000 gallons of water in a month

SEWAGE BASICS

Sewage treatment means removing impurities so that the remaining waste water can be safely returned to the river or sea and become part of the natural water cycle again.

Preliminary treatment - solids like wood, paper, rags and plastic are removed by

screens, washed, dried and taken away for safe disposal at a licensed waste site. Grit and sand, which would damage pumps, are also removed and disposed of in a similar way.

Primary treatment - the remaining solids are separated from the liquid by

passing the sewage through large settlement tanks, where most of the solid material sinks to the bottom. About 70% of solids settle out at this stage and are referred to as sludge. The sludge is then carried away to a disposal site.



SEWAGE BASICS—CONTINUED

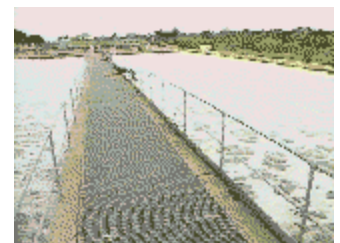
Secondary treatment - a biological process which relies on naturally occurring micro-organisms acting to break down organic material and purify the liquid.

In a simple sewage treatment process, micro-

organisms are encouraged to grow on stones over which the sewage is trickled. The micro-organisms, which need oxygen to thrive, feed on the bacteria in the sewage and purify the water. These treatment units are called **percolating filters**.

This process can be speeded up by blowing air into tanks of sewage where the micro-organisms float freely and feed on the bacteria. These treatment units are called **aeration tanks**.

(Continued Page 4)



**Nottingham Country
MUD**

Send All Correspondence To:
Nottingham Country MUD
Attn: Justine Cherne
c/o Allen Boone Humphries, LLP
Phoenix Tower-Greenway Plaza
3200 Southwest Freeway Suite 2600
Houston TX 77027

Phone: 713-860-6430
Fax: 713-860-6630
Email: jcherne@abhllp.com
Editor: Chuck Garibay

Sewage Basics-continued

Following either form of secondary treatment, the waste water is settled in tanks to separate the biological sludge from the purified waste water. Sometimes, extra treatment is needed to give the waste water a final "polish". This is known as **tertiary treatment**. Various methods may be used, including sand filters, reed beds or grass plots. Disinfection, using ultra violet light to kill bacteria, is another method, and is being used at a number of coastal sewage treatment schemes.

Source: <http://www.dcs.exeter.ac.uk/water/sewage.htm>

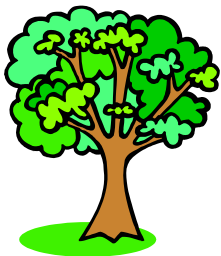
We're on the WEB!
www.nottinghammud.com

**WATER is a precious resource.
Use it WISELY**

Payments for water can be made in person at the following locations:

HEB @ Highland Knolls & S, Mason
ECO resources office 12535 Reed Road, Sugarland TX 77478
or
Mail: Nottingham Country MUD
PO Box 3030 Houston TX 77253-3030
Or
Automatic Debit. Please call ECO Resources at 281-240-1988

PARK NEWS-MIDGE ZAK



Park construction is almost complete. One area near Chateau Bend is not draining adequately and requires some grading work and installation of a catch basin to prevent continuous ponding. A section of the new walkway, west of Coblesprings failed to meet specifications and will be replaced. As temperatures rise the rye grass will be replaced with Bermuda seed. Bermuda grass will be the permanent grass throughout the Greenbelt Park year-round. Existing park rules signs have faded and will be replaced.

Wildflowers are not likely to bloom this spring due to the construction; however, seeding

plans are underway for October to yield a Spring 2005 bloom. Several new tree varieties have been planted on the Greenbelt Park. One new variety added is the *Chinese Pistache*. The Chinese Pistache tree does best in full sun. Its growth rate is slow to moderate and will reach about 50 feet tall and nearly equal spread. The Chinese Pistache tolerates a wide range of conditions including drought. The leaves are 2-4 inches long and 3/4 inches wide. In the fall the leaves turn luminous orange to red, sometimes yellow.

Friendly reminder to *precious pooch* owners. *Please, do not let your precious pooch poop up the*

place. Now that the interior of the Greenbelt Park is enjoyable for all please make sure if your doggie decides that's the place to "go", please follow and pick "it" up with a Mutt Mitt so little feet don't step in it later. Thanks for helping keep the Greenbelt Park clean and beautiful.

